

Robust and Reliable Fabric, Piezoresistive Multitouch Sensing Surfaces for Musical Controllers

Jung-Sim Roh
Fashion Textile Center
Seoul National University
Korea
simi1012@snu.ac.kr

Yotam Mann
CNMAT
1750 Arch Street
Berkeley, CA 94709
yotamann@berkeley.edu

Adrian Freed
CNMAT
1750 Arch Street
Berkeley, CA 94709
adrian@cnmat.berkeley.edu

David Wessel
CNMAT
1750 Arch Street
Berkeley, CA 94709
wessel@cnmat.berkeley.edu

ABSTRACT

The design space of fabric multitouch surface interaction is explored with emphasis on novel materials and construction techniques aimed towards reliable, repairable pressure sensing surfaces for musical applications.

Keywords

Multitouch, surface interaction, piezoresistive, fabric sensor, e-textiles, tangible computing, drum controller

1. INTRODUCTION

Multitouch array sensing with flexible substrates has been experimented with in the last three decades primarily for robotics, and medical sensing applications. Most of the research focus being on core sensing and materials questions. The novel contributions reported here primarily involve the integration challenges of flexible surface sensing for musical controllers where reliability, reparability and robustness have to be addressed in addition to the sensing and materials challenges. These less glamorous issues have been mostly ignored in academic and hobbyist music controller designs that are rewarded more for apparent “novelty” and potential than long-term viability. We suggest that the “New” in NIME also refers to the experience for the performer that their controllers perform “like new” every time they play them—for decades to come.

This quotation from a 2006 NIME paper on DIY paper sensors is indicative of the sort of problems we will address:

“a major point of discussion would be connection systems as it must not generate noise. Soldering is not possible with ink, paper and some metal foils. Hopefully, one can find efficient alternatives such as mechanical connecting systems” [15]

We focus here on piezoresistive, multitouch sensing surfaces because the now-popular capacitive multitouch systems [16] do not provide sufficient taxel pressure resolution for musical applications. CNMAT’s work for guitars [39] with Tactex Controls Inc. on the Kinotex [19] optical cavity sensing approach proved too difficult to scale to the high taxel counts required to capture nuanced musical gestures. FTIR optical surfaces have been developed with pressure sensitivity but they require bulky camera systems and have limited sensing bandwidth due to the slow frame rate of the cameras [32]. Systems fusing muscle sensing with surface sensing show some promise but the long reported latencies [2] (150ms) preclude them from most musical applications.

2. History of Piezoresistivity in Sound and Musical Applications

Piezoresistivity, the modulation of electrical resistance according to stress, is observed in elemental materials, semiconductors and composites. This property has been exploited in sound and musical applications for well over a

hundred years although it wasn’t necessarily understood as such in earlier times [33].

One of the most significant application of piezoresistivity was Alexander Bell’s microphone using carbon rods under strain. The subsequent commercial success of the telephone resulted in numerous refinements of carbon-based piezoresistive microphones from Edison, Berliner, Blake, Hughes, Hunnings and White and others.

By the late 1800’s piezoresistive microphones and liquid/conductor current modulation were broadly understood by engineers and were routinely used in early electronic musical instruments.

Singer’s 1893 patent [31] is interesting because its single claim is specifically a carbon-based piezoresistive sensor for keyboard musical instruments. The patent signals the use of carbon granules in an elastomeric substrate (rubber in this case) a technique still widely-employed and curiously for which patents are still regularly issued, e.g., US6820502 [34] (with no less than 80 claims).

The application Singer had in mind is also congruent to established musical interaction design patterns [37], i.e. where sound dynamics are controlled by pressure.

Piezoresistive pressure sensing techniques can be found in new electronic musical instruments and controllers throughout the twentieth century, and to the present day where they appear commercially at the rate of several products each year. There isn’t enough space here to survey them all properly—a search in european patent listings resulted in over 50 entries for musical instruments employing resistive sensing. We should however mention that the expressiveness valued in the Ondes Martenot [18], Heliphon [11] and Trautonium [35, 36] is attributable to their use of resistive, pressure sensing to control sound dynamics.

In 1982 Franklin Eventoff introduced Force Sensing Resistors (FSR), printed piezoresistive sensor assemblies specifically designed with musical applications in mind [7]. He developed low-cost, high volume manufacturing techniques for printing conductive ink and piezo-resistive polymer matrices onto plastic substrates. These devices are routinely used in NIME projects [17]. The advantage of using manufactured sensors is that they can be replaced from readily available spares instead of being repaired. This same approach is seen with guitar strings, for example.

When the Ondes Martenot touch key no longer performs as the player wishes they have to remix a new batch of the “magic” piezoresistive concoction that is placed in the leather sensing bag under the key [10] (carbon and mica). Part of the design of musical instruments assemblies involves deciding whether they are to be adjusted, repaired or replaced by the performer, a “technician”, a luthier or at a factory. The concept of Mean Time To Repair (MTTR) is useful here. A common design pattern is to place the repair, tuning and replacement of the most fragile or stressed components in the hands of the

performer. The oboe is an interesting case because of the high skill level required to construct a reed that is discarded—often after only a few hours of use. The Ondes Martenot touch key does not have to be replaced often but these days there is such a small network of technicians that the replacement task defers to performers. This paper will focus on design choices for piezoresistive multitouch surfaces driven by considerations of robustness and repairability and consistency of performance with the intention of guiding the development of instruments that can be played and maintained for the lifetime of the performer and beyond.

3. Materials

The core sensors we introduce are built from piezoresistive non-woven fabric from Eeonyx [8] and a new conductive, composite thread spun from silver-plated copper wire and polyester yarn [21-24].

3.1 Piezoresistive Substrate

Conductive-polymer-infused, non-woven fabrics have been refined by Eeonyx to minimize hysteresis and provide uniform resistivity with long-term stability. We rejected the option of conductor-loaded elastomeric materials (such as Zoflex [20]) because they exhibit higher hysteresis than fabric and paper and the conductor-loading considerably weakens the material—a concern in high impact situations such as drumming. Carbon-loaded paper has been proposed for these applications [14] with the idea that it is so cheap that it can be simply discarded and replaced as needed. This may be true for a single point pressure sensor but it isn't for large-tixel-count multitouch where connection and integration costs far outweigh material costs.

Although there are indications that paper sensors give comparable performance to fabric, such experiments were done in laboratory conditions with fresh materials. An advantage of fabrics is that they can be engineered from a wide variety of base materials to last longer and be less susceptible to environmental and insect damage than paper. Fabrics are also more flexible than paper and can be part of sensing surfaces with double curvature such as spherical sections.

3.2 Flexible, Robust, Solderable Conductive Thread

Piezoresistive materials may be sensed either by sandwiching them between two conductors or laying them onto a interdigitated grids of conductors. The designs proposed here use the former approach rather than the latter because it scales well to large tixel counts. This is because conductors can be simply arranged in parallel lines in orthogonal directions on the top and bottom of a single fabric patch.

Numerous choices for conductors in this application have been explored. We have chosen to use conductive embroidery thread because unlike printed silver inks, for example, threads can be easily repaired with readily-available tools and moderate skill level. With fabric and thread the core geometry of the instrument can be determined by the performer – just as the reed is customized by each Oboe player.

This customizability is also valued in the wearable electronics field. Although suitable for quick exploratory prototypes we

have learned we cannot directly adopt the readily available materials and components from the hobbyist e-textile and wearables community such as the Arduino Lilypad or silver-plated nylon thread: the resulting assemblies are not robust enough for extended use and the gesture signal processing performance and transmission is not fast enough.

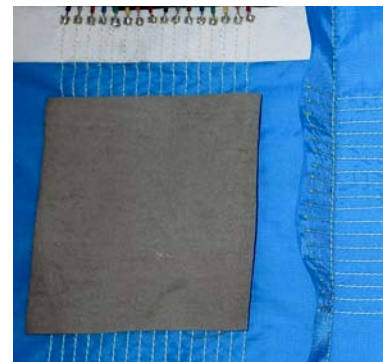
The spun-metal thread we are using has the advantage over silver-plated nylon thread of being less influenced by the effects of corrosion because of a higher overall metal content of the silver-plated copper wire. Another important advantage is that with an appropriate layout these threads may be soldered and this enormously simplifies the difficult challenge of reliably connecting the sensor array with conventional electronic circuits. With plated threads we have observed an alarming increase over time of the electrical resistance of connections—something that does not occur with a spun metal thread.

4. Implementation Topography

We have explored four different ways of implementing the well-known design pattern for flexible-surface, resistive multitouch [5]. We have confirmed that the different implementations performed similarly as position and pressure sensing arrays. This is not surprising since the basic piezoresistive material, conductive threads and spacing were the same for all of them. However laboratory-condition sensor performance is just one of many important properties we need to evaluate for these implementations. We will discuss the build, repair and maintenance issues of each.

4.1 Sandwich

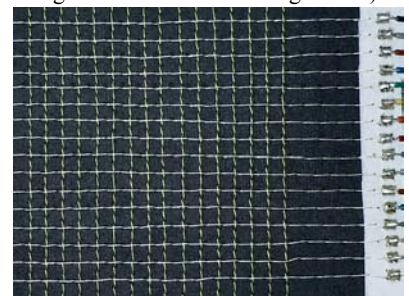
In this implementation the piezoresistive fabric is sandwiched between two non-conductive pieces of fabric each of which has parallel lines of conductive thread sewn into them. The three component fabrics are held together with a sparse



array of light tension stitches. The outside fabric pieces are of course arranged so the threads on top and bottom are orthogonal to each other.

4.2 Machine Sewn

An ordinary sewing machine is set up with a conductive bottom thread and insulating top thread. As parallel lines are sewn into the piezoresistive fabric thread tensions are carefully adjusted (or “misadjusted” according to conventional sewing norms) to minimize the possibility of conductive thread being pulled on to the wrong side of the fabric. After one side is complete the fabric is turned over and an orthogonal array of lines is sewn in.



Shorts between the layers can be avoided by careful positioning of the stitches on the second side.

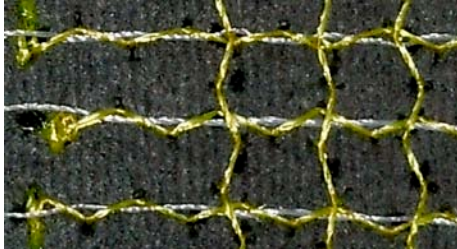
Permission to make digital or hard copies of all or part of this work for personal or classroom use is granted without fee provided that copies are not made or distributed for profit or commercial advantage and that copies bear this notice and the full citation on the first page. To copy otherwise, to republish, to post on servers or to redistribute to lists, requires prior specific permission and/or a fee.

NIME '11, 30 May–1 June 2011, Oslo, Norway.

Copyright remains with the author(s).

4.3 Trapped Conductor

An ordinary sewing machine is used to lay in narrow rows and columns of insulating zig-zag couching stitches on respective sides of the piezoresistive fabric. Conductive thread runs are then interlaced through the couching stitches by hand. Note that a variety of couching stitch styles could be employed including straight stitches or wide patterns. We chose the zig-zag stitch because interlacing the conductive threads is facilitated by the straight line path through them.



4.4 Woven

The woven implementation [29, 30] is the only one where the conductive threads periodically alternate sides of the piezoresistive fabric. The periods of these running stitches are synchronized so that orthogonal runs are always on opposite sides to each other.

These runs have to be created by hand, a process that can be sped up somewhat by laser-cutting an array of holes in the substrate fabric.



4.5 Discussion and Comparison of Construction Methods

The sandwich construction offers advantages for large production volumes because the outer layers can be cut from long, wide rolls of pre-manufactured fabric. We illustrate this in Figure 1 using a woven fabric that integrates stripes of conductive yarn made by Eleksen.



Figure 1: Strain-relieved cabling and solder pad

Note the use of spun-metal thread to transition between the conductive yarn and soldered connections to a flat cable. The sandwich construction also allows a worn or damaged piezoresistive patch to be easily replaced independently of the conductive components.

The machine-sewn construction is accessible to hobbyists on introductory-model sewing machines and results in a thin, one-piece assembly. Repairs to broken or frayed threads may be done by hand with the appropriate equipment.

The trapped conductor approach is the fastest to repair because only a needle and thread are required to replace an entire row or column.

The woven approach lends itself to rapid hand repair but the regular switching from one side of the substrate fabric to the other is not easy to automate. This means this approach will be rather labor intensive for high taxel counts. However this approach is worth considering when the application demands hand construction for other reasons. For example, when an array is required to match a non-rectangular and non-convex shape with cutouts such as the top plate of a guitar. Hand construction allows the density of sensory node points to be modulated throughout the surface and the integration of insulating patches to route conductors around holes and concavities.

5. Sensor Data Acquisition and Gesture Analysis

An important axis in the design space of touch sensing devices is the trade-off between complexity of the sensing surface and complexity in the data acquisition hardware and software systems. Capacitive multitouch [38] is popular in high volume consumer products because the complexity of the sensing challenge can be focussed in a single integrated circuit that performs analog and digital signal processing, calibration, gesture interpretation, data formatting and transmission. Capacitive sensor arrays are built at low cost per taxel by etching or printing processes that are already well-established for multiplexed flat displays. The difficulty of this particular point in the design space for musical instrument applications is that only standardized sizes and shapes are available and pressure sensing performance is poor or completely unavailable.

The 4-wire XYZ pad [13, 27, 41] is an example of how good pressure and position performance can be achieved at a range of sizes using fabric. These can be assembled in ten minutes with ordinary tools and skill. The basic data acquisition algorithms required are also accessible to hobbyists. However the spatial precision of this device depends on the uniformity of the piezoresistive fabric and good uncoupling of the interaction between pressure and position requiring use of algorithms less accessible to hobbyists [28]. The touch surfaces explored in this paper address these difficulties by moving some of the complexity into the construction, increasing the number of conductors across the surface so that the spatial resolution is mostly determined by the positioning accuracy of the conductive threads.

If gestures are assumed to be constrained to single touches in predetermined regions the gesture interpretation software is of moderate complexity and accessible to non-specialists. Of course the full potential of high density arrays of pressure sensors is inferring force profiles of large numbers of objects placed anywhere on the surface for which sophisticated machine vision algorithms are usually employed. This complexity can be managed by partitioning the design so that the electronics and software integrated into the touch surface delivers an uninterpreted taxel image that can be processed by the target computer system to the desired level of sophistication.

5.1 Multiplexed scanning of the surface

For moderate to large taxel counts multiplexing is employed: the cost of connections is too high in these applications for each

pressure sensing point in the array to be separately wired to a data acquisition channel. The main technical challenge with multiplexing resistive arrays is to isolate the resistance change at a particular node in the array from neighboring resistance changes. Many approaches to this are known [12] and some have been evaluated in terms of acquisition performance and implementation complexity [6]. These older complexity measures that count discrete components such as op-amps, drivers, analog switches etc. are not very useful in current designs because these components are now integrated into embedded microcontrollers. Also component costs have dropped to a point where integration and connection costs now dominate designs. For this reason there is a renewed interest in data acquisition techniques that involve wiring the sensing array directly to the microcontroller with a minimum number of external components.

By writing software that dynamically changes the function of microcontroller pins from outputs to A/D conversion inputs we have implemented data acquisition without any other external components for both XYZ pads and multitouch arrays. However in the multitouch case it is difficult to eliminate lateral current flows across the piezoresistive fabric without additional electronics to avoid the cross-talk contaminating taxel pressure estimates.

Developers of the “UnMousePad” [25] added conductors to reduce crosstalk by introducing anisotropy [26] in the conductivity of the piezoresistive material. Their demonstrations were built with established conductive ink printing processes where these additional conductors add no cost. Since our sensors are embroidered their approach would result in an increase cost in time and materials in the surface. We have found that a careful, efficient implementation of current nulling approaches [9] addresses crosstalk without substantially increasing systems costs. A single op-amp and resistor is required for each of either the row or column conductors. An important advantage of the current nulling approach is that an entire row or column of taxels can be measured concurrently—an essential requirement to achieve a high sample rate (8kHz) for large taxel arrays.

6. Integration Design and Implementation

It is a formidable challenge to reliably connect the conductors from a flexible sensing surface that is subject to high continuous and impulsive stress and strain to the relatively rigid and unyielding circuit boards holding the sensor acquisition electronics. Promising techniques are being developed for intrinsic fabric electronics and flexible circuit constructions for extrinsic electronics for textile applications. A recent adaptation of chip-on-board techniques to a fabric substrate is attractive [40]. However low-volume or hobbyist application of these approaches is unlikely in the near future especially when high connection counts are required.

We summarize here a series of exploratory experiments that have yielded viable solutions to the connection problem for low production and hobbyist applications.

The following table quantifies the problem. It describes variations in electrical contact resistance of various approaches to connecting conductive spun-wire thread to circuit boards including wrapping, gluing with conductive epoxy and soldering.

Further work is needed in this area to develop stronger data with analysis of long-term failure processes with accelerated life testing etc. but we have enough data to conclude that the particular contact method matters.

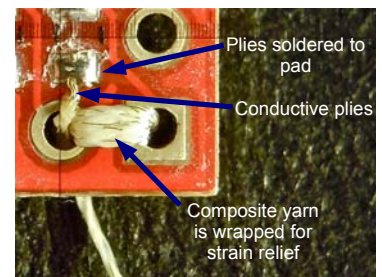
Connection	Before Mechanical Stress		After Mechanical Stress	
	avg resistance (ohms)	std dev	Avg. resistance (ohms)	std dev
10x wrap	.43	.16	.25	.034
5x wrap	.202	.053	.271	0.04
5x wrap + CircuitWork conductive epoxy	.255	.036	fail	n/a
5x wrap + MG chemicals conductive epoxy	.189	.015	.149	.023
5x wrap + solder on same hole	.142	.0144	.17	.024
0x wrap with stress relief on adjacent hole	.263	0.05	fail	n/a

We also found that the fastest method for hand construction with readily-available tools is soldering. In automated production conductive glues are attractive because they can be printed, and achieve higher densities than soldering because they don't require special structures to dissipate heat. We focus now on soldering because construction is rapid, repair is much faster than conductive glues. Solder has a longer shelf-life and easier accessibility than conductive glues.

7. Soldered textile connections

7.1 Strain relief wrapping

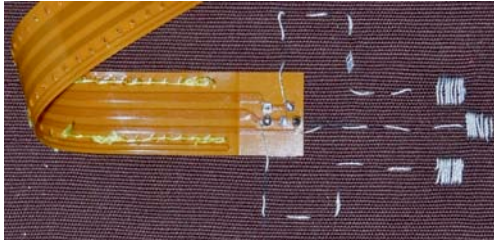
Since a soldered joint holds the thin wires of the spun-metal thread to a large rigid surface the wires can quickly suffer metal fatigue and breakage unless strain relief is



provided. One solution illustrated here is to lace the thread into a pair of holes and then solder the metal plies to a third contact point on the board. We prefer this approach to the scheme on the Arduino Lilypad [3, 4] of wrapping the thread between a hole and the edge of a fiber glass circuit board. The edge of these boards is much more abrasive than a plated hole. In any case it is essential that the circuit board be well anchored to the substrate fabric with other threads specifically optimized for this purpose so that the stress of snags and pulls of the board are absorbed by them instead of the conductive threads. To better control these two different roles of threads it is advantageous to provide a zig zag and loose path for the conductive threads.

Another alternative for circuit board connections is to use existing multiwire cabling assemblies such as ribbon cables and solder these to specially constructed fabric solder pads as shown in Figure 1 and described more fully in the next section. Notice that the flat cable is anchored to the substrate fabric with insulated-thread stitches in the interstices of the conductors.

The example below shows the compatibility of the spun-metal thread with flexible circuit board materials, another approach to strain relief:



7.2 Embroidered Soldering Pad and Via

Solder melting points are higher than the melting and combustion temperatures of many fabric materials. Our solution with the spun-metal embroidery thread is to sew pads on cotton tape that serves to insulate the polyester piezoresistive fabric and to provide a large enough pad area so the heat is rapidly dissipated evenly across its surface.

Note that by embroidering the pads with conductive thread on both sides a via is formed allowing for all the soldered connections for the array to be implemented on one side of the fabric.

The space is left in the layout design for sewing a new pad to connect to in the case of failures. This is more reliable ultimately than reusing the original pad.

In the example of Figure 1 various circuit paths are explored. Alternating access to each side of a run increases the density of the pads. Connecting both sides of a run provides a redundant path that allows a run to still function correctly with a single breakage anywhere along it.



8. Software considerations

Before driving current into the array a special sequential scan is done to identify shorted and broken conductors. Shorts across the two layers require immediate repair. Broken connections and shorts between adjacent conductors can be compensated for in the software.

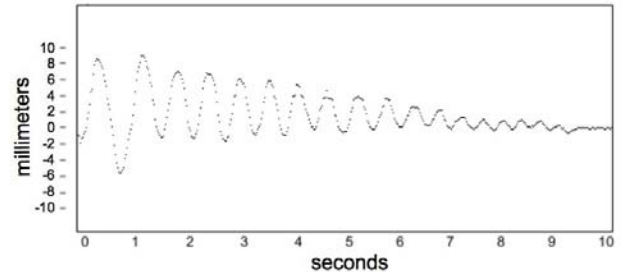
During regular use any unusual pressure data triggers the same power-on evaluation sequence. The idea is to provide enough resilience so that a performer need not abort a performance when a single wire breaks or shorts.

To avoid performance bottlenecks from USB we encode an array scan as compact OSC blobs with one byte per taxel.

9. Performance and Spatial Density

Readily available 8-bit microcontrollers with integrated USB can scan a 12x12 taxel array at around 200Hz. The limiting factor in these chips is the A/D conversion speed. 32-bit microcontrollers with 16 channels of A/D conversion are available with higher A/D conversion rates and can scan a 16x16 taxel array at 500Hz. At this point the USB implementations become the limiting factor. This can be addressed by tiling 4 multitouch arrays and microcontrollers and aggregating the four streams with a USB 2.0 hub. For arrays larger than 32x32 custom hardware using FPGA's is a better way of managing the necessary parallelism to achieve high sample rates and host computer communication rates [37]. This is the scale where hobbyist fabric multitouch becomes challenging. The impact of these constraints is application dependent because conductor and spatial sampling density are still free variables of the design. We have chosen to explore 2.5mm and 5mm spacing. We believe the former may provide

sufficient spatial resolution to estimate both finger position and orientation on the surface. The latter is sufficient to estimate finger position with sufficient resolution to capture vibrato-like gestures quite well. In this recording below the vertical axis represents displacements in mm of the second nuckle of the performer's index finger. This measuring point is 5.4cm from the tip of the finger at the sensing surface.



10. Conclusion and Future Work

We have achieved 7-bit dynamic range of pressure sensing at each taxel of our piezoresistive multitouch arrays. The piezoresistive fabric we are using was designed for foot pressure measurements so we have excellent sensitivity for ballistic and high pressures. We will refine the materials to improve this sensitivity for light stroking gestures.

As we gain more experience with our smaller arrays we will scale up and move away from USB 2.0 to USB 3.0 or Gigabit Ethernet to approach our goal of an 8kHz taxel frame rate. At these rates multicore parallel computation will be required to execute the machine vision algorithms for effective taxel scene analysis [1].

We have demonstrated new design techniques to create robust, reliable and repairable multitouch. We continue to explore faster and easier methods of construction both for small scale manufacturing and individual hobbyists.

11. Acknowledgements

We gratefully acknowledge the support of Meyer Sound Labs. and Disney/Pixar.

12. Bibliography

- [1] Battenberg, E., Freed, A. and Wessel, D. Advances in the Parallelization of Music and Audio Applications *ICMC, CMA*, 2009.
- [2] Benko, H., Saponas, T.S., Morris, D. and Tan, D. Enhancing input on and above the interactive surface with muscle sensing *Proceedings of the ACM International Conference on Interactive Tabletops and Surfaces*, ACM, Banff, Alberta, Canada, 2009, 93-100.
- [3] Buechley, L., Eisenberg, M., Catchen, J. and Crockett, A. The LilyPad Arduino: using computational textiles to investigate engagement, aesthetics, and diversity in computer science education *Proceeding of the twenty-sixth annual SIGCHI conference on Human factors in computing systems*, ACM, Florence, Italy, 2008, 423-432.
- [4] Buechley, L. and Hill, B.M. LilyPad in the wild: how hardware's long tail is supporting new engineering and design communities *Proceedings of the 8th ACM Conference on Designing Interactive Systems*, ACM, Aarhus, Denmark, 2010, 199-207.
- [5] Burgess, L.E. Tactile Sensing Transducer. USPTO #5060527, 1991.

- [6] D'Alessio, T. Measurement errors in the scanning of piezoresistive sensors arrays. *Sensors and Actuators A: Physical*, 72 (1). 71-76, 1999.
- [7] Eventoff, F.N. Electronic Pressure Sensitive Transducer Apparatus. USPTO #4314227, 1982.
- [8] Freed, A. Application of new Fiber and Malleable Materials for Agile Development of Augmented Instruments and Controllers *NIME 2008*, 2008.
- [9] Freed, A. Novel and Forgotten Current-steering Techniques for Resistive Multitouch, Duotouch, and Polytouch Position Sensing with Pressure *NIME 2009*, 2009.
- [10] Guillot, I., Hartman-Claverie, V. and Vaiedelich, S. Maurice Martenot: La poudre de l'enchanteur *CIM09*, Paris, France, 2009.
- [11] Helberger, B. Electrical Musical Instrument. USPTO #2201232, 1938.
- [12] Hillis, W.D. A High-Resolution Imaging Touch Sensor. *The International Journal of Robotics Research*, 1 (2). 33, 1982.
- [13] Kazuhiko Ito, F.I.U., Myagi. Input Device. USPTO #4529959, 1985.
- [14] Koehly, R. Fabrication of Sustainable Resistive-Based Paper Touch Sensors: Application to Music Technology (forthcoming). Doctorate Thesis McGill University 2011.
- [15] Koehly, R., Curtil, D. and Wanderley, M., Paper FSRs and latex/fabric traction sensors: methods for the development of home-made touch sensors. in, (2006), IRCAM, Centre Pompidou, 230-233.
- [16] Lee, S., Buxton, W. and Smith, K.C. A multi-touch three dimensional touch-sensitive tablet. *SIGCHI Bull.*, 16 (4). 21-25, 1985.
- [17] Marshall, M. and Wanderley, M. Evaluation of sensors as input devices for computer music interfaces. *Computer Music Modeling and Retrieval*. 130-139, 2006.
- [18] Martenot, M. Résistance variable pour instrument de musique électriques et radio-électriques. Industrielle, D.d.I.P. #703923, 1930.
- [19] Reimer, E. and Baldwin, L. Cavity Sensor Technology for Low Cost Automotive Safety and Control Devices *Air Bag Technology 99*, Detroit, 1999.
- [20] RFMicroLink Zoflex. 2011. <http://www.rfmicrolink.com/products.html>.
- [21] Roh, J., Chi, Y. and Kang, T. Thermal insulation properties of multifunctional metal composite fabrics. *Smart Materials and Structures*, 18. 025018, 2009.
- [22] Roh, J., Chi, Y. and Kang, T. Wearable textile antennas. *International Journal of Fashion Design, Technology and Education*, 3 (3). 135-153, 2010.
- [23] Roh, J., Chi, Y., Lee, J., Nam, S. and Kang, T. Characterization of embroidered inductors. *Smart Materials and Structures*, 19. 115020, 2010.
- [24] Roh, J., Chi, Y., Lee, J., Tak, Y., Nam, S. and Kang, T. Embroidered Wearable Multiresonant Folded Dipole Antenna for FM Reception. *IEEE Antennas and Wireless Propagation Letters*, 9. 803, 2010.
- [25] Rosenberg, I. and Perlin, K. The UnMousePad: an interpolating multi-touch force-sensing input pad. *ACM Trans. Graph.*, 28 (3). 1-9, 2009.
- [26] Sado, R. Anisotropically Pressure-Sensitive Electroconductive Composite Sheets and Method for the Preparation Thereof. USPTO 1981.
- [27] Sandbach, D.L. Multiplexing Detector Constructed from Fabric#US6492980, 2001.
- [28] Schmeder, A. and Freed, A. Support Vector Machine Learning for Gesture Signal Estimation with a Piezo Resistive Fabric Touch Surface *NIME*, Sydney, Australia, 2010.
- [29] Shimojo, M., Makino, R., Namiki, A., Ishikawa, M., Suzuki, T. and Mabuchi, K., A sheet type tactile sensor using pressure conductive rubber with electrical-wires stitches method. in, (2002), IEEE, 1637-1642.
- [30] Shimojo, M., Namiki, A., Ishikawa, M., Makino, R. and Mabuchi, K. A tactile sensor sheet using pressure conductive rubber with electrical-wires stitched method. *Sensors Journal, IEEE*, 4 (5). 589-596, 2004.
- [31] Singer, P. Electric Musical Instrument. USPTO #501543, 1893.
- [32] Smith, J.D., Graham, T.C.N., Holman, D. and Borchers, J., Low-Cost Malleable Surfaces with Multi-Touch Pressure Sensitivity. in *Horizontal Interactive Human-Computer Systems, 2007. TABLETOP '07. Second Annual IEEE International Workshop on*, (2007), 205-208.
- [33] Strangways, H. The Action of the Telephone. *THE TELEGRAPHIC JOURNAL AND ELECTRICAL REVIEW*. 216, 1882.
- [34] Tongbi Jian, Z.W. High Resolution Pressure-sensing device having an insulating flexible matrix loaded with filler particles. USPTO #6820502, 2004.
- [35] Trautwein, F. Device for the Production of Musical Sounds by Electrical methods. UK #403365, 1933.
- [36] Trautwein, F. Electrical Musical Instrument. USPTO #2141231, 1938.
- [37] Wessel, D., Avizienis, R., Freed, A. and Wright, M., A force sensitive multi-touch array supporting multiple 2-D musical control structures. in *NIME*, (2007), ACM, 41-45.
- [38] Westerman, W. Hand Tracking, Finger Identification, and Chordic Manipulation on a Multi-touch Surface. Ph. D. Thesis Ph. D. University of Delaware 1999.
- [39] Wright, M., Freed, A., Lee, A., Madden, T. and Momeni, A. Managing Complexity with Explicit Mapping of Gestures to Sound Control with OSC *International Computer Music Conference*, International Computer Music Association, Habana, Cuba, 2001, 314-317.
- [40] Yoo, J., Yan, L., Lee, S., Kim, H. and Yoo, H. A wearable ECG acquisition system with compact planar-fashionable circuit board-based shirt. *Information Technology in Biomedicine, IEEE Transactions on*, 13 (6). 897-902, 2009.
- [41] Yoshikawa, O. Pressure Sensitive Three-Dimensional Tablet and Manipulation Data Detecting Method Therefor. USPTO #5852260, 1998.